

**in rent a Milano**  
**\*Porta Venezia - T22**  
**€ 41.250**  
**Ref. MA25040**



**1.123 sq.m. | Bathrooms: 3**

Milan, just steps from the Lima MM1 metro station, in a splendid building of particular architectural value and historical interest. The façade is particularly noteworthy for its classic and elegant late 19th-century architecture. We offer for rent a renovated open-plan unit of approximately 1,123 sq m.

The office is spread over two levels: the third floor, approximately 856 square meters, and the second floor, approximately 267 square meters, connected by a large internal staircase and an elevator. The floors consist of large open spaces currently used as a showroom and enclosed offices that overlook a bright internal terrace.

The property offers all the features of a modern building, including floating calcium sulphate floors with a customizable PVC finish, independent heating and air conditioning with heat pumps, primary air conditioning, a certified electrical system, an alarm system, LED lighting, category 5E data systems, a data center with provision for rack cabinets, and fully renovated utility blocks.

Possibility of creating a break corner/kitchen space.

Parking spaces, garages, and storage rooms are available in the basement of the complex, which can be reached directly by elevator.

Condominium fees approximately €31/m2/year

For information and inspections

L'immobiliare.com Milano Magenta  
Milano Via Vincenzo Monti 12 - MM1-MM2 Cadorna - MM1 Conciliazione  
milano.magenta@l'immobiliare.com  
Tel. +39 02 49600881 === Mob. +39 392 1430000 === Mob. +39 340 6404288  
You can also contact us via WhatsApp at +39 334 1960048

## Property details

**Address:** Piazza Lima

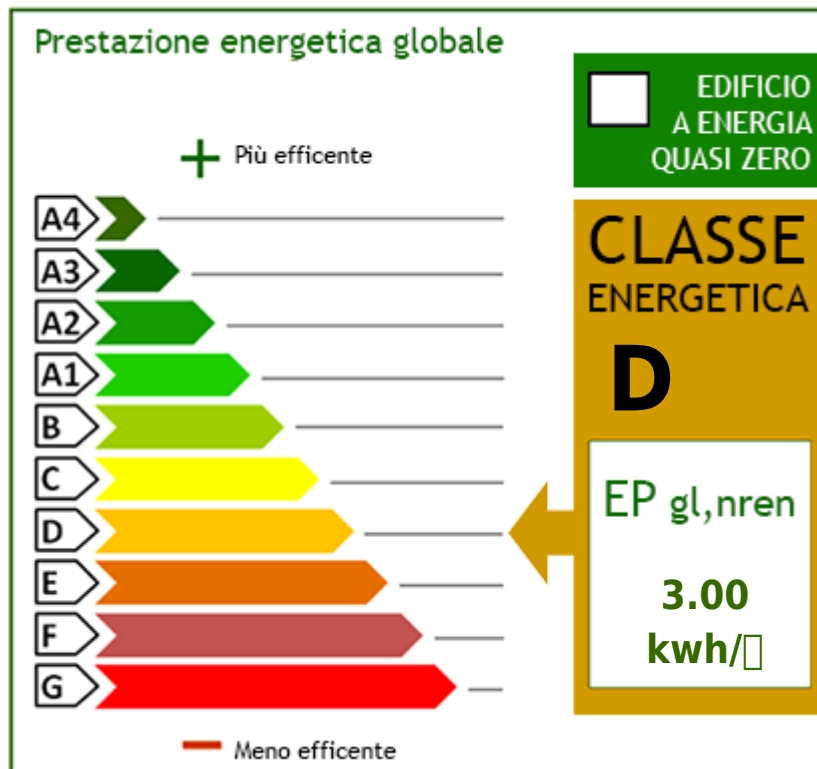
**Zip Code:** 20124

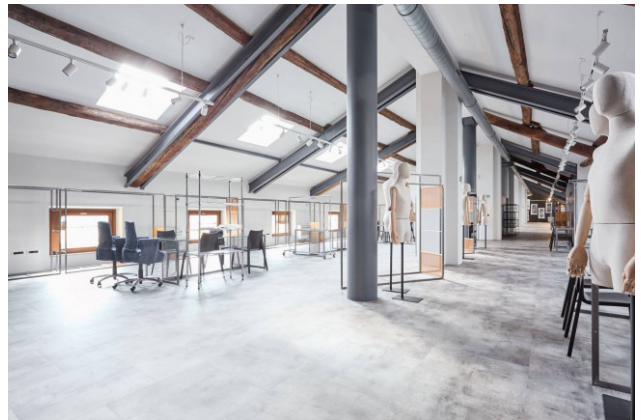
**Bathrooms:** 3

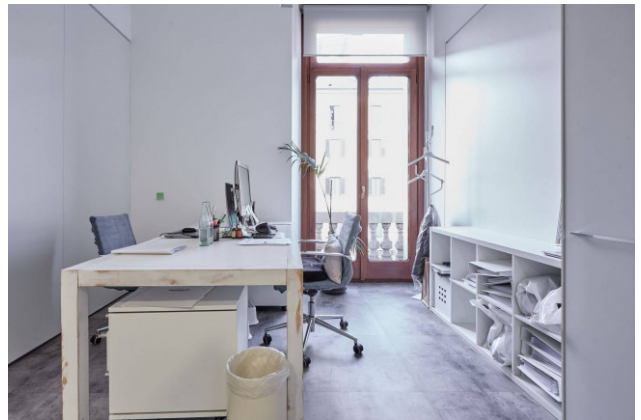
**State of Preservation:** Restored

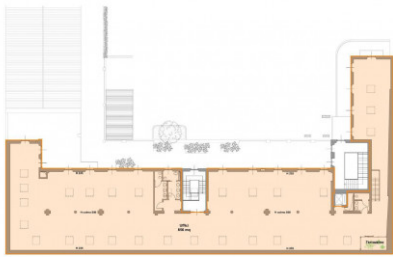
**Heating:** Heating

**Building Costs:** € 2.900









Pianta piano 3



Pianta piano 2

Pianta Piano 2.2	
Distribuzione	Mq. coperto
Ufficio - piano 2	387
Ufficio - piano 3	595
TOT	982