

**in sale a Vigevano**  
**Sforzesca**  
**€ 1.270.000**  
**Ref. MCAR25001**



**4.925 sq.m.**

VIGEVANO (PV), in the renowned area of the historic center and the Sforza Castle, one of the most prestigious in the city, in Corso della Repubblica, in excellent condition, building with triple exposure from the early 70s, of significant size, four floors above ground and two underground, currently free except for a portion of the ground floor rented with excellent profitability.

The building extends over a total surface area of approximately 4924 m<sup>2</sup>, distributed over several levels.

The property lends itself to various residential and/or commercial solutions, both for large-scale distribution and for neighborhood sales, offices/coworking.

On the ground floor there are 14 windows which, combined with the strategic position of the building, guarantee optimal visibility for the commercial premises.

The various floors are accessible by elevators, stairs, freight elevators and escalators and the open-plan interior spaces are large and well-lit thanks to the numerous windows that overlook both the main road and the side streets. The flat roof is accessible and usable.

The location of the building is extremely favorable, both for the large influx of people and for the proximity of a large parking lot.

This building represents an excellent investment opportunity in an area of great prestige and visibility.

For information and inspections  
Real estate.com City Life Milan

Arduino Square 1 - MM1 Amendola - MM5 Three Towers  
Tel. +39 02 89.00.173 === Mob. +39 337.25.13.40  
milano.citylife@l'immobiliare.com  
You can also contact us via WhatsApp at +39 337.25.13.40

## Certification

**Energy Class:** G

.....

## Property details

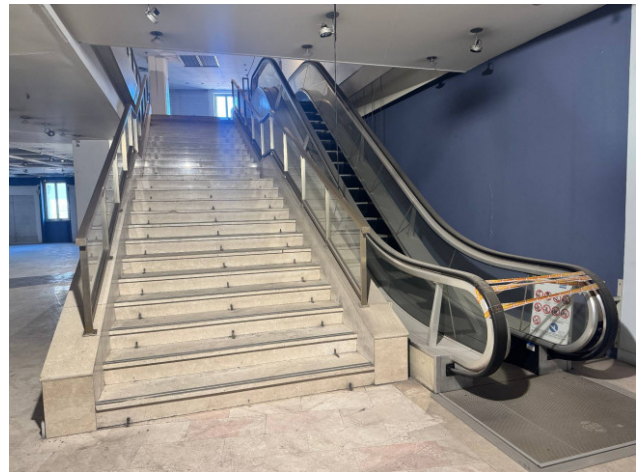
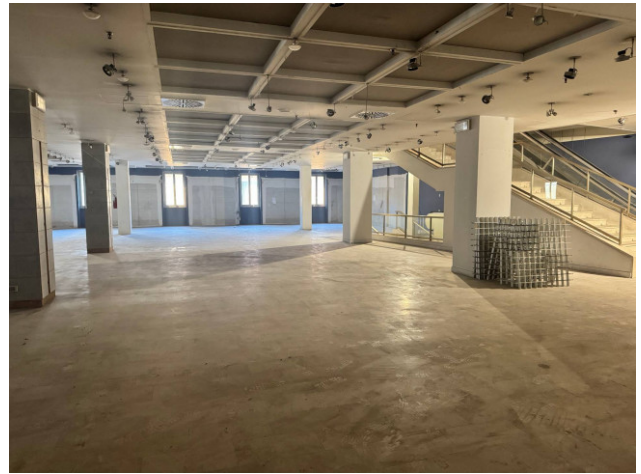
**Address:** Corso della Repubblica

**State of Preservation:** Excellent

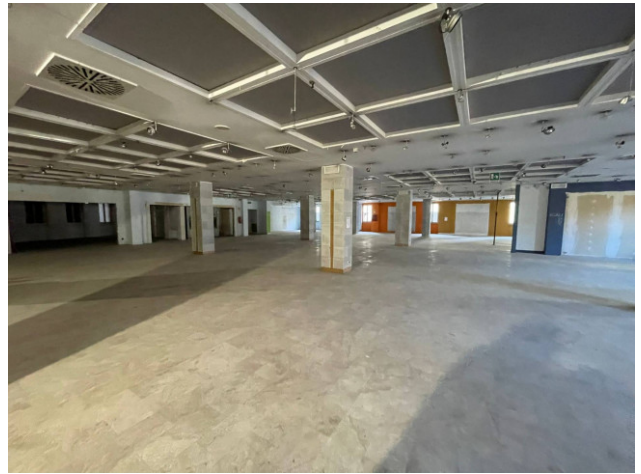
.....

**Number Of Windows:** 14

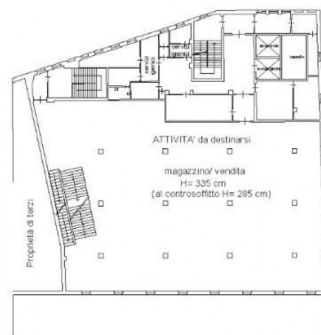
.....





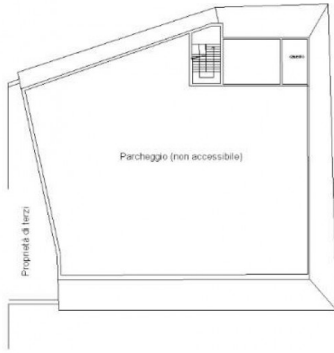


PIANO PRIMO  
H 3.35

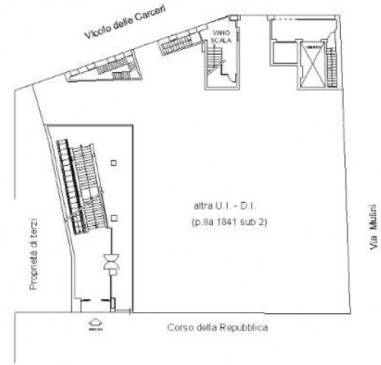


PIANO SECONDO  
H 3.35

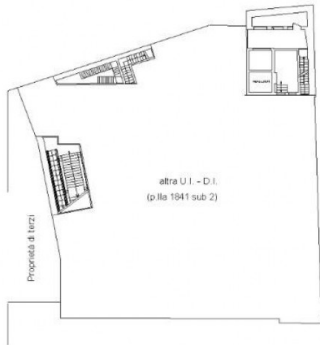




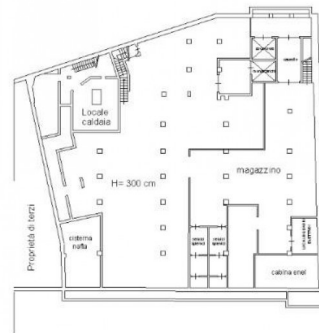
**PIANO TERZO (copertura)**



**PIANO TERRA  
H 3.95**



**PIANO PRIMO SOTTOSTRADA  
H 3.35**



**PIANO SECONDO SOTTOSTRADA  
H 3.00**